



ARDB 2019. AFRICAN RAPTOR DATABANK:  
a secure, live data observatory for the  
distribution and movements of African raptors.  
Habitat Info Ltd, Solva, UK.  
www.habitatinfo.com/ardb\_observatory/  
02/12/2019: 15:32:27

# 1050 Banded Kestrel

*Falco zoniventris*

IUCN Status **Least Concern**  
IUCN (2019-2)

male mass = 190 g  
female mass = 230 g  
mean mass = 210 g

area requirement (of pair/2.2 individuals) = 5 km<sup>2</sup>

from Newton (1979) figure 10:  $area\ km^2 = 0.4 + (0.02 * female\ mass\ g)$   
replaced by direct measurement of field density where we have data

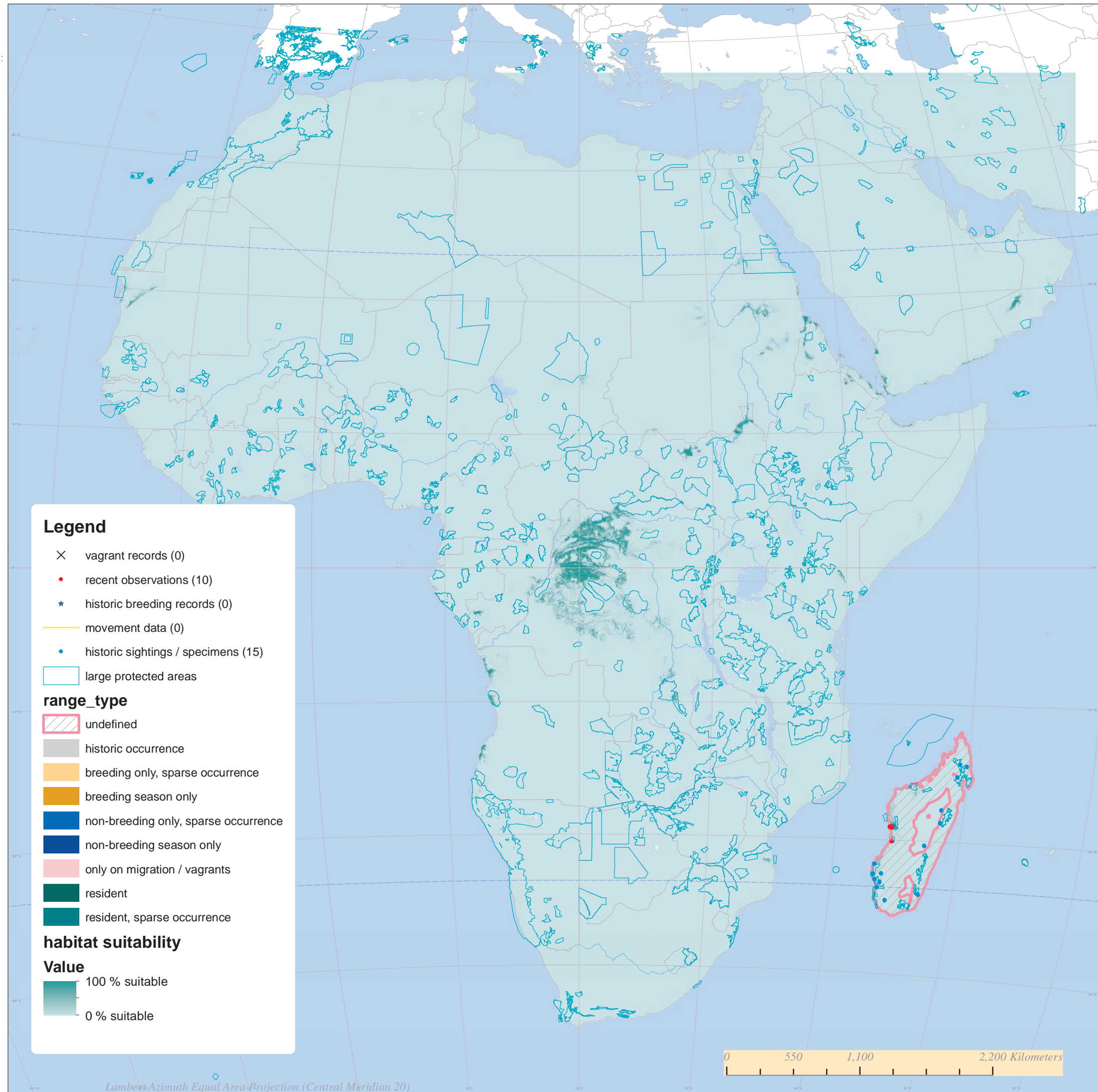
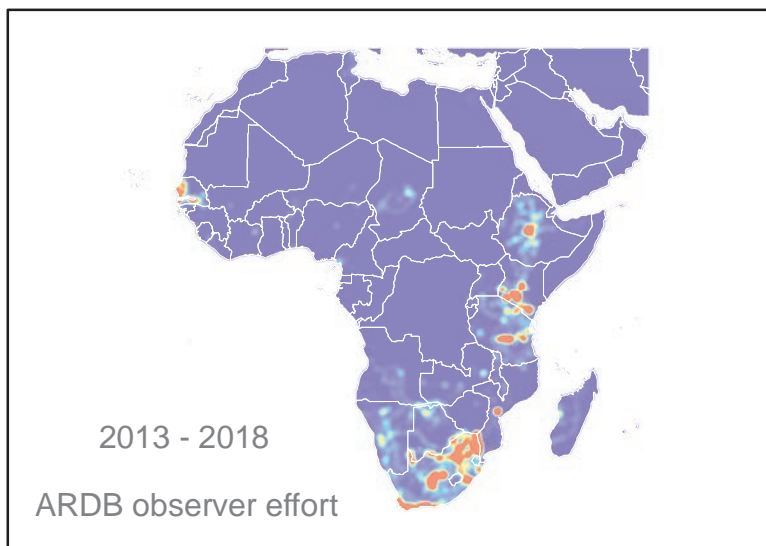
this figure is used for estimating density of breeding individuals and offspring in good habitat  
we assume twice the area requirement in suboptimal habitat  
and half the area requirement in optimal habitat  
breeding population estimates represent theoretical maxima where habitat is saturated  
nest-site limitation and the floating / non-breeding population are not yet fully accounted for

## HABITAT SPACE ANALYSIS

	extent (km <sup>2</sup> )	individuals	pairs
suboptimal 25-50% suitable	247153		
good habitat 50-70% suitable	107297		
optimal habitat 70-100% suitable	51015		
total habitat 25-100% suitable	405465		

## reporting rate from mobile app survey data

2014 (26724 km) : birds per 100 km  
2015 (87188 km) : birds per 100 km  
2016 (81150 km) : birds per 100 km  
2017 (57721 km) : birds per 100 km  
2018 (19798 km) : birds per 100 km



**Legend**

- × vagrant records (0)
- recent observations (10)
- ★ historic breeding records (0)
- movement data (0)
- historic sightings / specimens (15)
- large protected areas

**range\_type**

- ▨ undefined
- historic occurrence
- breeding only, sparse occurrence
- breeding season only
- non-breeding only, sparse occurrence
- non-breeding season only
- only on migration / vagrants
- resident
- resident, sparse occurrence

**habitat suitability**

**Value**

- 100 % suitable
- 0 % suitable