



ARDB 2019. AFRICAN RAPTOR DATABANK:
 a secure, live data observatory for the
 distribution and movements of African raptors.
 Habitat Info Ltd, Solva, UK.
www.habitainfo.com/ardb_observatory/
 02/12/2019: 15:34:41

1060 Common Kestrel

Falco tinnunculus

IUCN Status Least Concern
 IUCN (2019-2)

male mass = 190 g
 female mass = 230 g
 mean mass = 200 g

area requirement (of pair/2.2 individuals) = 5 km²

from Newton (1979) figure 10: $area\ km^2 = 0.4 + (0.02 * female\ mass\ g)$
 replaced by direct measurement of field density where we have data

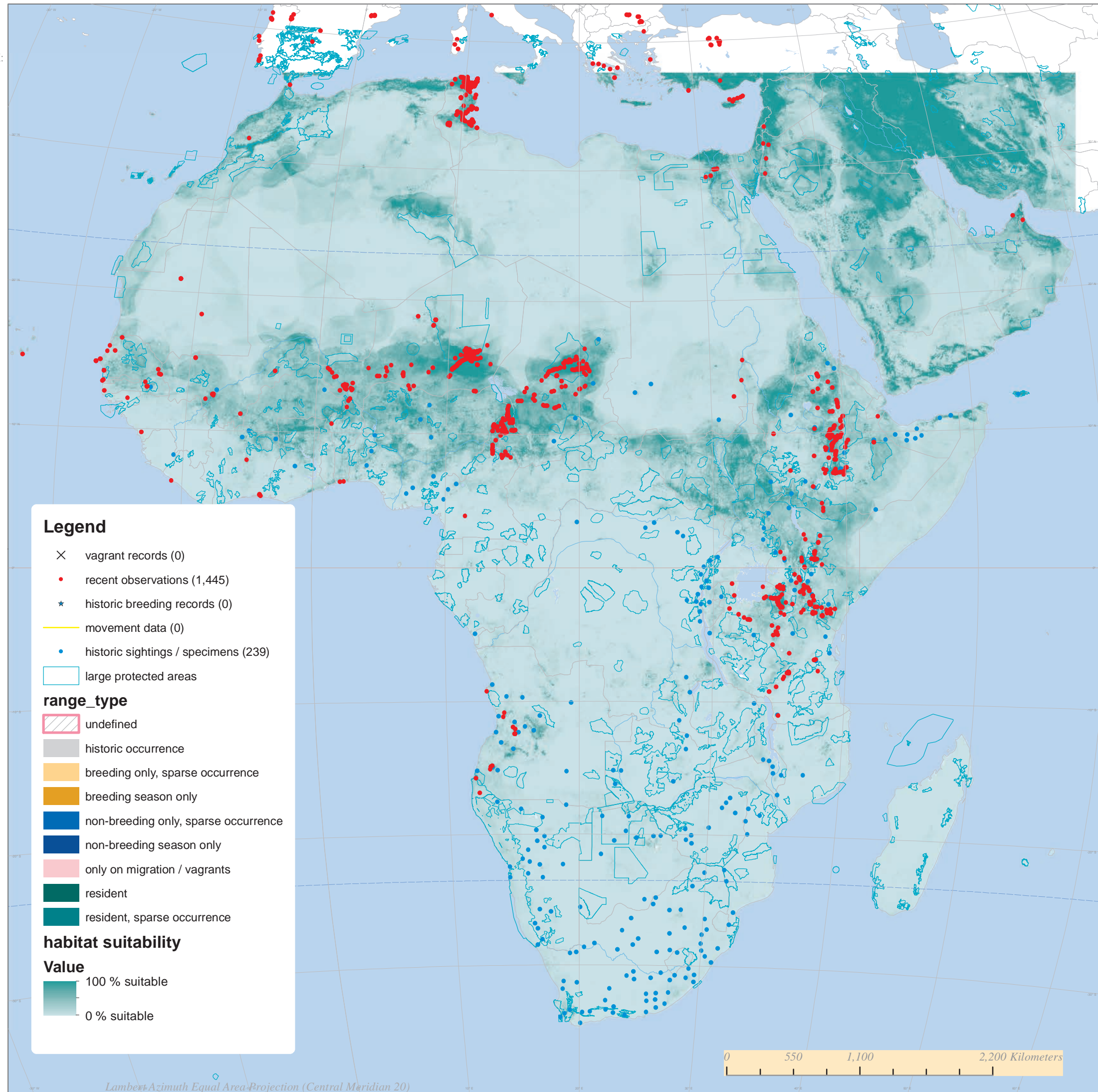
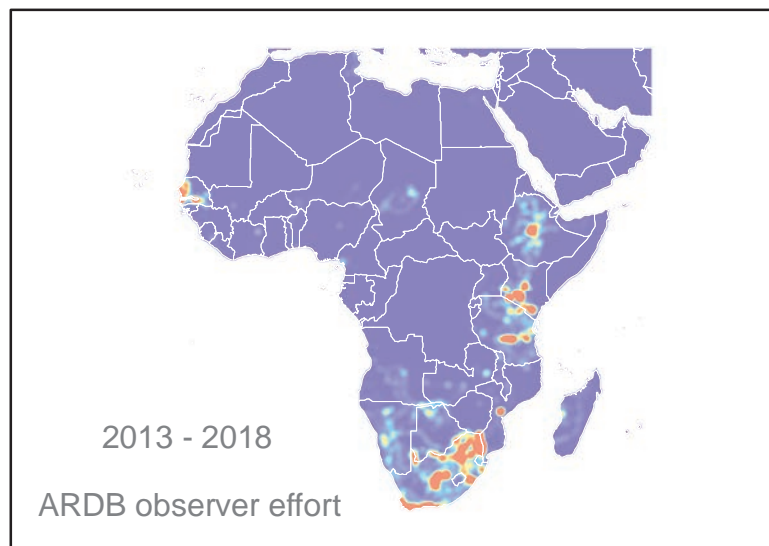
this figure is used for estimating density of breeding individuals and offspring in good habitat
 we assume twice the area requirement in suboptimal habitat
 and half the area requirement in optimal habitat
 breeding population estimates represent theoretical maxima where habitat is saturated
 nest-site limitation and the floating / non-breeding population are not yet fully accounted for

HABITAT SPACE ANALYSIS

	extent (km ²)	individuals	pairs
suboptimal 25-50% suitable	5662117	1245666	566212
good habitat 50-70% suitable	1252694	551185	250539
optimal habitat 70-100% suitable	289746	254976	115898
total habitat 25-100% suitable	7204557	2051828	769435

reporting rate from mobile app survey data

2014 (26724 km) : 0.041162 birds per 100 km
 2015 (87188 km) : 0.043584 birds per 100 km
 2016 (81150 km) : 0.057917 birds per 100 km
 2017 (57721 km) : 0.124739 birds per 100 km
 2018 (19798 km) : 0.015153 birds per 100 km



Lambert Azimuth Equal Area Projection (Central Meridian 20)