



ARDB 2019. AFRICAN RAPTOR DATABANK:  
a secure, live data observatory for the  
distribution and movements of African raptors.  
Habitat Info Ltd, Solva, UK.  
www.habitatinfo.com/ardb\_observatory/  
02/12/2019: 12:32:43

# 320 Greater Spotted Eagle

*Aquila clanga*

IUCN Status **Vulnerable**  
IUCN (2019-2)

male mass = 1800 g  
female mass = 2200 g  
mean mass = 2000 g

area requirement (of pair/2.2 individuals) = 44.4 km<sup>2</sup>

from Newton (1979) figure 10:  $area\ km^2 = 0.4 + (0.02 * female\ mass\ g)$   
replaced by direct measurement of field density where we have data

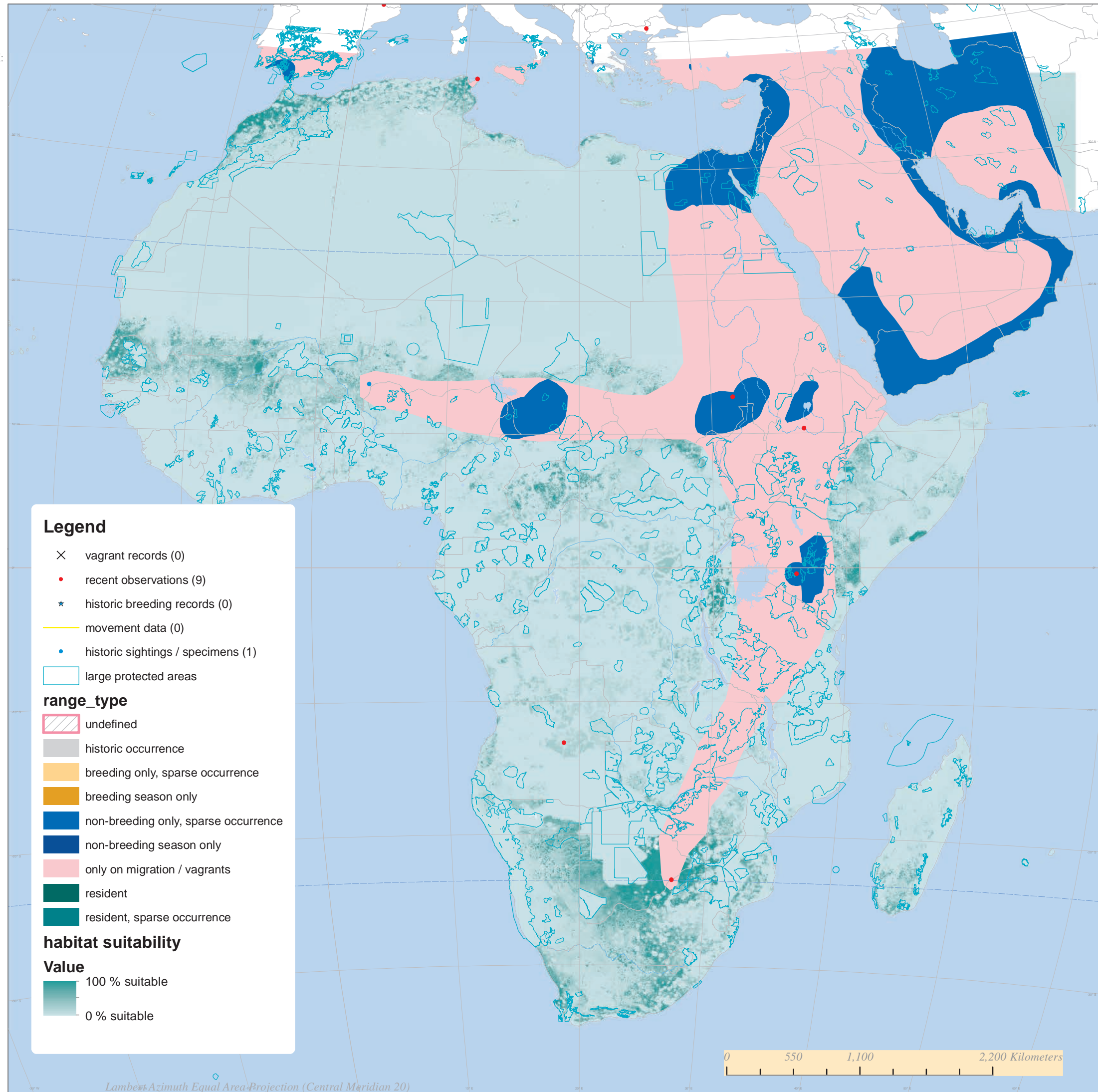
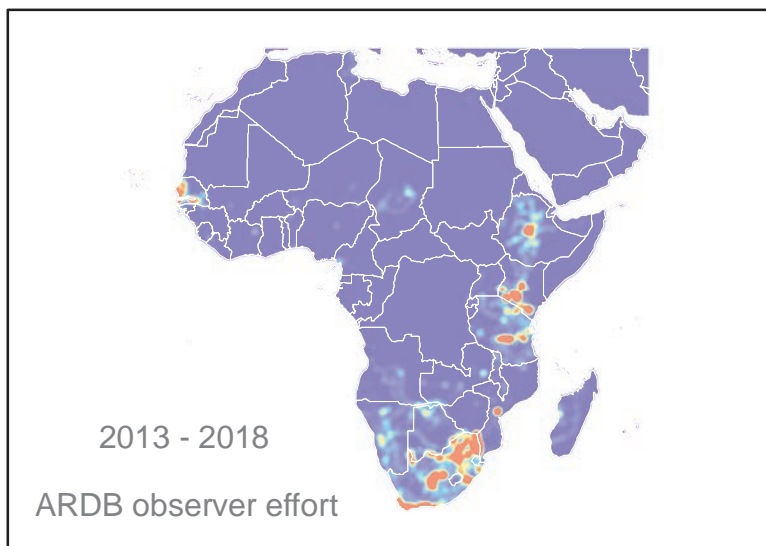
this figure is used for estimating density of breeding individuals and offspring in good habitat  
we assume twice the area requirement in suboptimal habitat  
and half the area requirement in optimal habitat  
breeding population estimates represent theoretical maxima where habitat is saturated  
nest-site limitation and the floating / non-breeding population are not yet fully accounted for

## HABITAT SPACE ANALYSIS

	extent (km <sup>2</sup> )	individuals	pairs
suboptimal 25-50% suitable	371249	9198	0
good habitat 50-70% suitable	149903	7428	0
optimal habitat 70-100% suitable	94352	9350	0
total habitat 25-100% suitable	615504	25975	0

## reporting rate from mobile app survey data

2014 (26724 km) : birds per 100 km  
2015 (87188 km) : 0.010323 birds per 100 km  
2016 (81150 km) : birds per 100 km  
2017 (57721 km) : 0.001732 birds per 100 km  
2018 (19798 km) : birds per 100 km



**Legend**

- × vagrant records (0)
- recent observations (9)
- ★ historic breeding records (0)
- movement data (0)
- historic sightings / specimens (1)
- large protected areas

**range\_type**

- ▨ undefined
- historic occurrence
- breeding only, sparse occurrence
- breeding season only
- non-breeding only, sparse occurrence
- non-breeding season only
- only on migration / vagrants
- resident
- resident, sparse occurrence

**habitat suitability**

**Value**

- 100 % suitable
- 0 % suitable

0 550 1,100 2,200 Kilometers

Lambert Azimuth Equal Area Projection (Central Meridian 20)