



ARDB 2019. AFRICAN RAPTOR DATABANK:
 a secure, live data observatory for the
 distribution and movements of African raptors.
 Habitat Info Ltd, Solva, UK.
 www.habitainfo.com/ardb_observatory/
 02/12/2019: 15:09:40

950 Taita Falcon

Falco fasciinucha

IUCN Status **Vulnerable**
 IUCN (2019-2)

male mass = 222 g
 female mass = 322 g
 mean mass = 272 g

area requirement (of pair/2.2 individuals) = 6.84 km²

from Newton (1979) figure 10: $area\ km^2 = 0.4 + (0.02 * female\ mass\ g)$
 replaced by direct measurement of field density where we have data

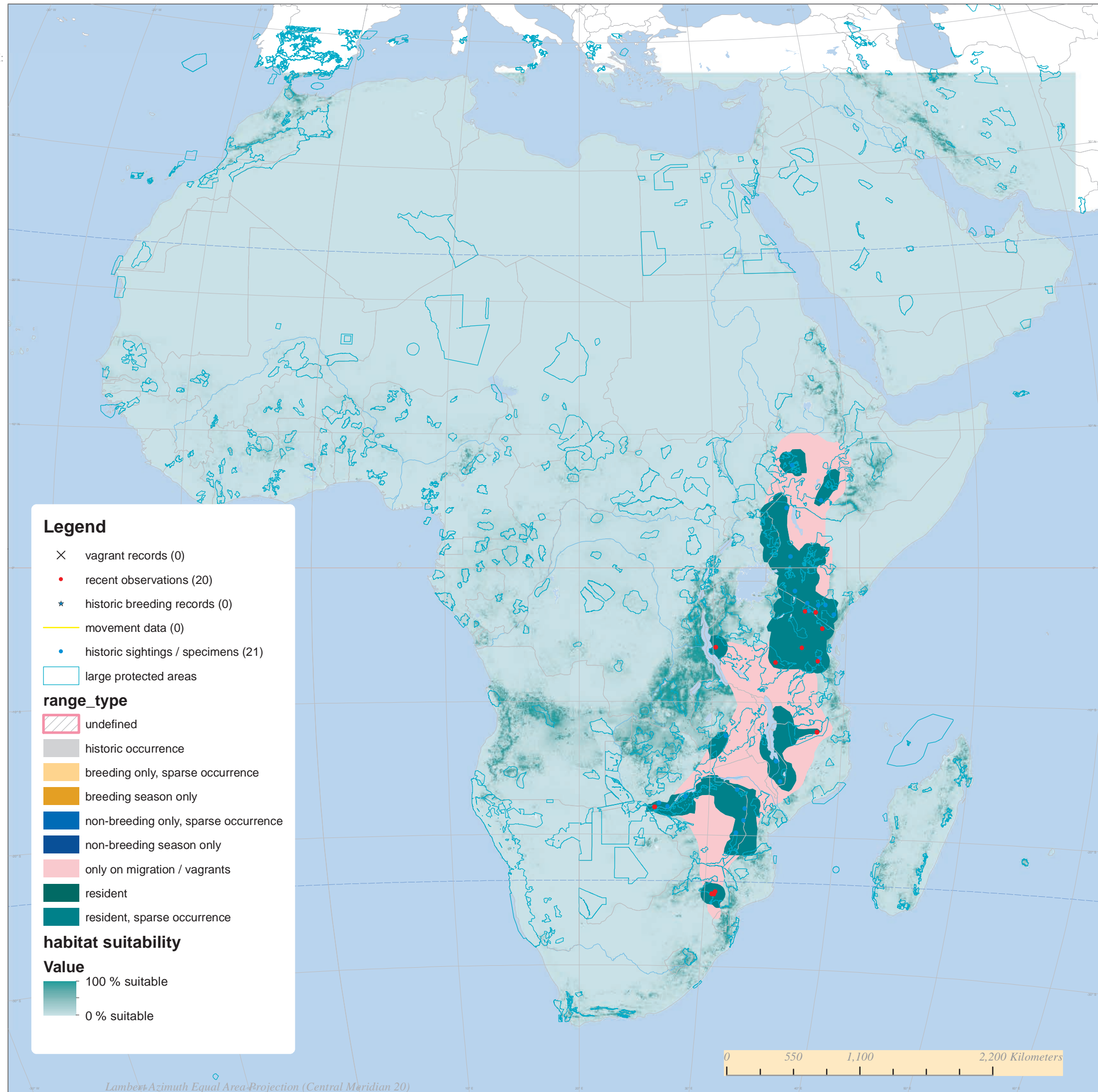
this figure is used for estimating density of breeding individuals and offspring in good habitat
 we assume twice the area requirement in suboptimal habitat
 and half the area requirement in optimal habitat
 breeding population estimates represent theoretical maxima where habitat is saturated
 nest-site limitation and the floating / non-breeding population are not yet fully accounted for

HABITAT SPACE ANALYSIS

	extent (km ²)	individuals	pairs
suboptimal 25-50% suitable	1393821	224152	101887
good habitat 50-70% suitable	493323	158671	72123
optimal habitat 70-100% suitable	240622	154786	70357
total habitat 25-100% suitable	2127766	537610	201604

reporting rate from mobile app survey data

2014 (26724 km) : birds per 100 km
 2015 (87188 km) : birds per 100 km
 2016 (81150 km) : 0.002465 birds per 100 km
 2017 (57721 km) : 0.001732 birds per 100 km
 2018 (19798 km) : 0.010102 birds per 100 km



Legend

- × vagrant records (0)
- recent observations (20)
- ★ historic breeding records (0)
- movement data (0)
- historic sightings / specimens (21)
- large protected areas

range_type

- undefined
- historic occurrence
- breeding only, sparse occurrence
- breeding season only
- non-breeding only, sparse occurrence
- non-breeding season only
- only on migration / vagrants
- resident
- resident, sparse occurrence

habitat suitability

Value

- 100 % suitable
- 0 % suitable